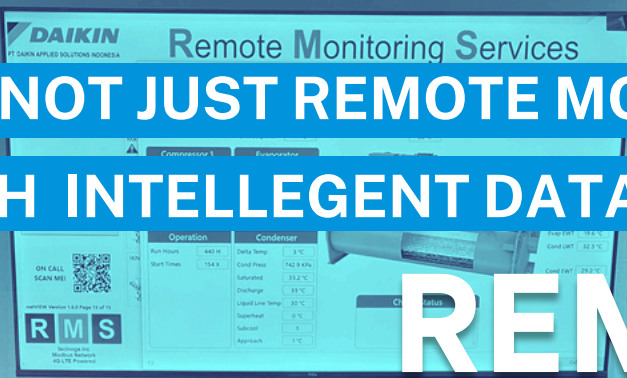


NOT JUST REMOTE MONITORING,
BUT WITH INTELLIGENT DATA ANALYSIS

REMOTE MONITORING SERVICES



DASI introducing **RMS Remote Monitoring Services**) to help Daikin Chiller users stay updated on the latest system conditions while providing analysis and predictive insights for future maintenance needs.

As IoT adoption continues to grow across industries, DASI takes the lead by offering expert-driven technical analysis. This empowers users to gain deeper insights while collaborating seamlessly with our skilled technicians, ensuring smarter, faster, and more reliable decisions for their HVAC systems.

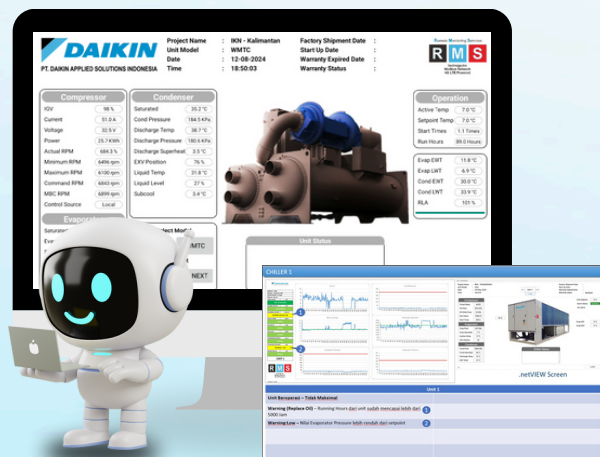
OVERALL BENEFITS

- Maximize data analysis from multiple locations
- Supports installation with up to 5 chillers
- Provides real-time unit condition updates via IoT
- Simple system configuration and installation
- Can serve as a record for other equipment beyond chillers

DASI REMOTE MONITORING SERVICES KIT

It is equipped with a range of vital connection components and features, including standard communication protocols such as Modbus/BACnet, with the capability to operate as a slave for external systems. Specifications:

- 1x LAN Port
- 1x RS485 (Added KIT)
- 3x USB Port
- ARM's CPU and 2Gb - 4Gb OnBoard Memory
- 32Gb Storage (Fit in 5 years recorded)



Monitoring the Plan of Chiller and Updated Online data for analysis

A.I.R (Artificial Intelligent of Refrigeration) to self-analyze Chiller data and get some information of abnormally

Displayed with Touch Screen

- Latest CPU Design
- Internet Connectivity LAN/WiFi
- Wall mounted compliance with Control Room/Standby Room

Use External Monitor (for Large Monitoring)

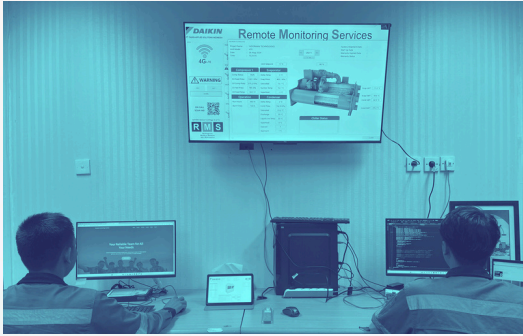
- Mini ITX PC's
- LAN/Wi-Fi internet connection
- HDMI 4K Present
- USB Keyboard & Mouse
- Low Power consumption
- Moveable

PC likes monitoring

- Desktop PC with Display/Keyboard & Mouse

Dedicated PC for RMS Software Only

Remote Monitoring Services



Designed to integrate the DASI Control and Daikin Controls lineup, this system enables seamless monitoring and recording through IoT.

The device is provided during the warranty period for Daikin units sold by DASI, recording operational data throughout the warranty to support analysis and deliver added value for after-sales service. It also serves as an additional tool within DASI's Maintenance Contracts, offering enhanced data logging and analysis during service periods.

Furthermore, it functions as a recording device for various equipment using open protocols such as Modbus/Backnet.

DASI Remote Monitoring Services can be accessed through the official website using a registered login at www.daikinapplied.co.id/dasi-rms



DASI Remote Monitoring Services
Touch/Operation

Now RMS can be real-time controlling using RMS software.

Users can operate and controller using IOT design Leveling Password and User name will charge in this devices.

- Industrial product of HMI (Windows OS/Linux OS PCs)
- Latest CPU Design
- Internet Connectivity LAN/WiFi
- Wall mounted compliance with Control Room/Standby Room